

AutoFlush® Clamp

Touch-Free Flushing System



technical concepts
Innovative Hygiene Solutions



- Keeps Fixtures Flushed and Presentable
- World-Class Reliability
- Easy One Minute Installation

AutoFlush® Clamp

The AutoFlush Clamp is the ultimate in performance and simplicity, ensuring that urinals and toilets are always flushed and presentable. Installation takes only one minute and there is no need to shut off the water. The AutoFlush Clamp promotes good hygiene by eliminating potential points of cross-contamination, while preventing odors by ensuring that fixtures are flushed after every use.

Keeps Fixtures Flushed and Presentable

No need to replace your current investment of flush valves or move plumbing rough-in to accommodate ADA compliance. Fitting this battery operated automatic flushing device onto your existing flush handle makes perfect economic sense. Adapting to the AutoFlush Clamp is the easiest and most cost effective way to gain the benefits of Touch-Free flushing system.

World-Class Reliability

Smart Object Infrared Technology manages flushing automation like no other system today. The angled lens design combined with sophisticated sensor technology guarantees activation even with the toilet seat raised. The AutoFlush Clamp has a "Smart Touch" range adjustment feature. With a proven track record, this dependable technology ensures good hygiene for patrons and occupants of your facilities.

Easy One Minute Installation

Installation is easy because no water shut-off is required to convert your washroom to a higher standard of hygiene. Merely change batteries every 3 plus years or 60,000 flushes (battery reserve feature allows 9,000 flushes after Low Battery indicator begins to flash). Batteries are included.

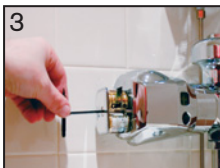
Easy 1, 2, 3 Installation



1 Fits over existing handle

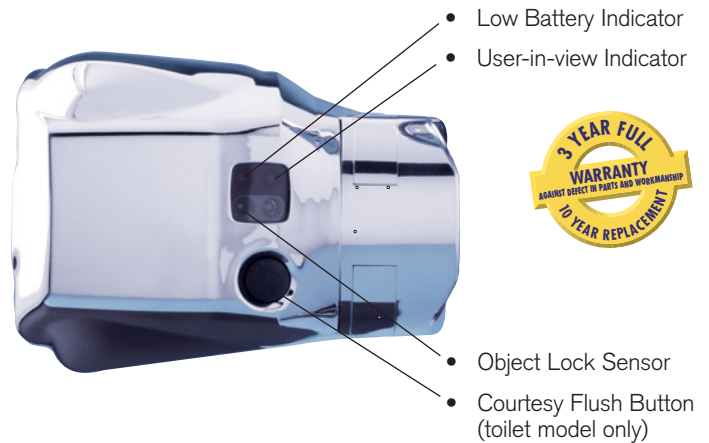


2 Secure the mounting clamp (two screws)

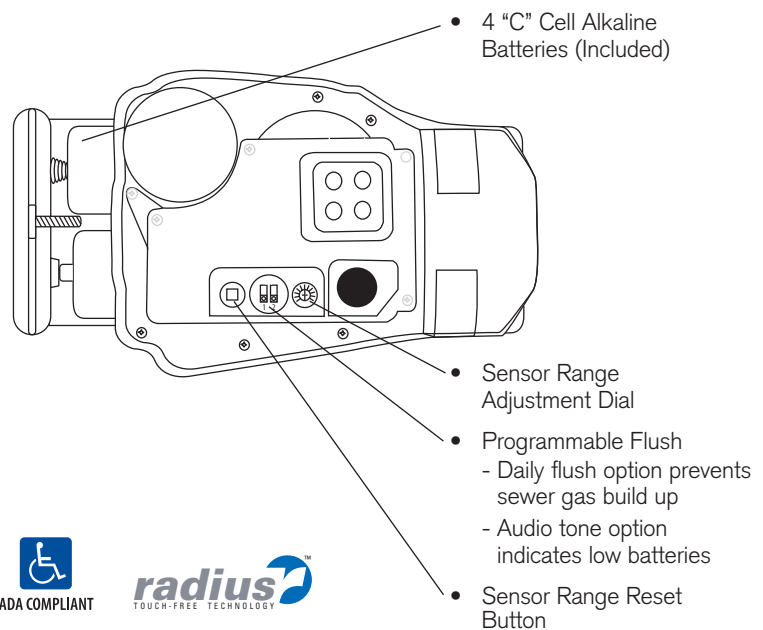


3 Insert Batteries

AutoFlush Clamp Exterior Features



AutoFlush Clamp Interior Features



AutoFlush Clamp

Stock#	Description
401804.....	Urinal, Polished Chrome
401805.....	Toilet, Polished Chrome
402060.....	Urinal, Metal - Polished Chrome
402059.....	Toilet, Metal - Polished Chrome

Adapters

Stock#	Description
401972.....	Coyne & Delany/Crane/Rex Adapter Kit
401979.....	Sloan Gem Adapter Kit
401980.....	Toto Adapter Kit
401973.....	Canadian Adapter Kit (Crane, Teck, Tempus)



World Headquarters:
Serving North and South America

Technical Concepts LLC
1301 Allanson Road
Mundelein, Illinois 60060 U.S.A.
Toll Free: 1-800-551-5155
Fax: 1-800-551-5046

www.technicalconcepts.com

European Headquarters:
Serving Europe, Africa and Middle East

Technical Concepts International Ltd.
Peterborough, PE2 6WA, England
Phone: +44 (0)870 568 6824

Asian Headquarters:
Serving Asia and Pacific

Technical Concepts Asia
14100, Penang, Malaysia
Phone: (60) 4 508 5008

